



Syringes

# SOL-CARE™ Safety Syringe



SOL-CARE™ Safety Syringe is a retracting needle manual safety syringe. It is designed to prevent needlestick injuries and syringe reuse by retracting the needle into the barrel.

- Compatible with all standard hypodermic needles.
- Easy to use.
- Fingers remain behind the needle during activation of safety mechanism.
- Clear and bold scale markings.
- Visual and audible confirmation of safety mechanism activation.

## CE-marked



Product Options	Available Syringe Sizes
with Fixed Needle	0.5 ml 1 ml
with Exchangeable Needle	3 ml 5 ml 10 ml 20 ml
without Needle	3 ml 5 ml 10 ml 20 ml

Flexibility in product customization for packaging and labeling.

# SOL-CARE™ Safety Syringe



Syringes

Quick and easy activation of safety mechanism.



**PUSH**



**PULL**



**SNAP**

## Product Specification

### CE-marked

SOL-CARE™ Safety Syringe product line offers comfortable and convenient injection solutions for key therapeutical areas.

Therapeutical area	Product	Syringe size
Diabetes	SOL-CARE™ Insulin Safety Syringe with Fixed Needle	0.5 ml 1 ml
Allergy	SOL-CARE™ TB Safety Syringe with Fixed Needle	1 ml
Immunization	SOL-CARE™ Safety Syringe with 26G 3/8" and intradermal bevel	1 ml

Flexibility in product customization for packaging and labeling.



# SOL-CARE™ Safety Syringe

## SOL-CARE™ TB Safety Syringe with Fixed Needle

Reference number	Capacity	Gauge size	Outer diameter (mm)	Length		Shelf Box / Shipping Case (pcs)
				(mm)	(inch)	
100090IM	0.5 ml	27G	0.4 mm	12.5 mm	1/2"	100/1000
100006IM	0.5 ml	23G	0.6 mm	25 mm	1"	100/1000
100019IM	1 ml	27G	0.4 mm	12.5 mm	1/2"	100/1000
100070IM	1 ml	26G	0.45 mm	10 mm	3/8" IDB	100/1000
100018IM	1 ml	25G	0.5 mm	16 mm	5/8"	100/1000



## SOL-CARE™ Luer Lock Safety Syringe without Needle

Reference number	Capacity	Shelf Box / Shipping Case (pcs)
120006IM	3 ml	100/800
120007IM	5 ml	100/800
120008IM	10 ml	100/800
120009IM	20 ml	50/600



## SOL-CARE™ Insulin Safety Syringe U-100 Insulin Only (with Fixed Needle)

Reference number	Capacity	Gauge size	Outer diameter (mm)	Length		Shelf Box / Shipping Case (pcs)
				(mm)	(inch)	
100089IM	0.5 ml	30G	0.3 mm	8 mm	5/16"	100/1000
100002IM	0.5 ml	29G	0.33 mm	12.5 mm	1/2"	100/1000
100017IM	1 ml	29G	0.33 mm	12.5 mm	1/2"	100/1000



More sizes available on demand

# SOL-CARE™ Safety Syringe



CE-marked

SOL-CARE™ Luer Lock Safety Syringe with Exchangeable Needle

Reference number	Capacity	Gauge size	Outer diameter (mm)	Length		Shelf Box / Shipping Case (pcs)
				(mm)	(inch)	
100064IM	3 ml	23G	0.6 mm	32 mm	1 1/4"	100/800
100077IM	3 ml	23G	0.6 mm	25 mm	1"	100/800
100076IM	3 ml	22G	0.7 mm	40 mm	1 1/2"	100/800
100062IM	3 ml	22G	0.7 mm	32 mm	1 1/4"	100/800
100072IM	3 ml	21G	0.8 mm	40 mm	1 1/2"	100/800
140076IM	5 ml	22G	0.7 mm	40 mm	1 1/2"	100/1200
140062IM	5 ml	22G	0.7 mm	32 mm	1 1/4"	100/1200
140072IM	5 ml	21G	0.8 mm	40 mm	1 1/2"	100/1200
160072IM	10 ml	21G	0.8 mm	40 mm	1 1/2"	100/1200
190072IM	20 ml	21G	0.8 mm	40 mm	1 1/2"	50/600

More sizes available on demand





Syringes

# SOL-GUARD™ Safety Syringe and Insulin Syringe with Fixed Needle

## Features & Benefits

SOL-GUARD™ product line covers a safety-engineered Syringes with Fixed Needle for various types of injections. It is designed to reduce the risk of needlestick injuries to patients and healthcare workers before and during the injection process.

**Transparent Locking Safety Shield with Easy Grip Ridges** - protects during transportation.

**Transport Position** - eliminates the need to recap the needle after draw-up of medication.

**Low Dead Space** - reduces medication waste.

**Clear and Bold Scale Markings.**



## Instructions for use



Draw up the desired dose of medication as per facility protocol.



Extend the safety shield forward over the top of the needle until you feel the positive stop and hear an audible click. This ensures the safety shield is in place for safe transportation of the syringe to the patient.



Retract the safety shield until it snaps into its original position and administer medication as per facility protocol.

Immediately following injection, extend the safety shield forward fully until an audible click is heard. To lock the safety shield, twist in either direction until you feel the positive stop and hear an audible click.

Syringe cannot be reused once activated.



# SOL-GUARD™ Safety Syringe and Insulin Syringe with Fixed Needle



Syringes

## CE-marked

SOL-GUARD™ TB Safety Syringe with Fixed Needle						
Reference number	Capacity	Gauge size	Outer diameter (mm)	Length		Shelf Box / Shipping Case (pcs)
				(mm)	(inch)	
2031516SG	0.3 ml	31G	0.25 mm	8 mm	5/16"	100/800
2051516SG	0.5 ml	31G	0.25 mm	8 mm	5/16"	100/800
2131516SG	1 ml	31G	0.25 mm	8 mm	5/16"	100/800

SOL-GUARD™ Insulin Safety Syringe U-100 Insulin Only (with Fixed Needle)						
Reference number	Capacity	Gauge size	Outer diameter (mm)	Length		Shelf Box / Shipping Case (pcs)
				(mm)	(inch)	
2331516SG	0.3 ml	31G	0.25 mm	8 mm	5/16"	100/800
2531516SG	0.5 ml	31G	0.25 mm	8 mm	5/16"	100/800
200091SG	1 ml	31G	0.25 mm	8 mm	5/16"	100/800

More sizes available on demand

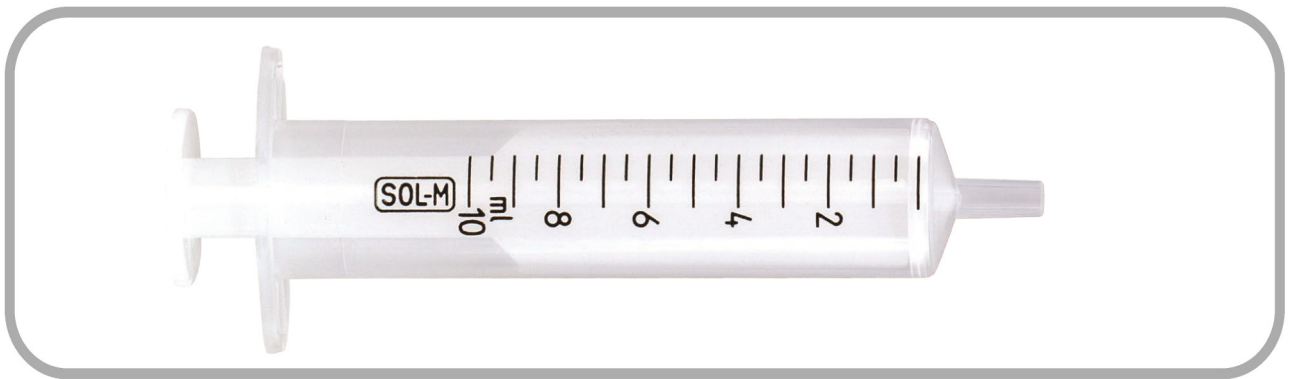




Syringes

# SOL-M™ Syringe, 2-piece

- **High-transparency barrel** - makes it easy to see syringe content.
- **Safe plunger backstop** – prevents accidental withdrawal of plunger.
- **Smooth plunger movement** – reduces sliding force.
- **Large and stable finger grip** – ensures stability and comfort during injection.
- **Black graduation scale** – provides ideal contrast and readability.



● **Luer Slip Tip - concentric and eccentric options.**



Concentric (2 ml)



Eccentric (5-20 ml)

# SOL-M™ Syringe, 2-piece



Syringes

- Capacity from 2 ml to 20 ml.
- Made of polypropylene and polyethylene.
- DEHP-, PVC- free, not made with natural rubber latex.
- Sterile and single-use.
- Sterilization method: ethylene oxide.



**ALSO AVAILABLE! - orange contrasting plunger**

## CE-marked

Reference number	Capacity	Tip	Plunger	Scale Graduation	Shelf Box / Shipping Case (pcs)
313001WP	2 ml	concentric	white	0.1 ml	100/3000
307005WP	5 ml	eccentric	white	0.2 ml	100/1800
308003WP	10 ml	eccentric	white	0.5 ml	100/1200
309003WP	20 ml	eccentric	white	1 ml	70/840
313001OP	2 ml	concentric	orange	0.1 ml	100/3000
307005OP	5 ml	eccentric	orange	0.2 ml	100/1800
308003OP	10 ml	eccentric	orange	0.5 ml	100/1200
309003OP	20 ml	eccentric	orange	1 ml	70/840



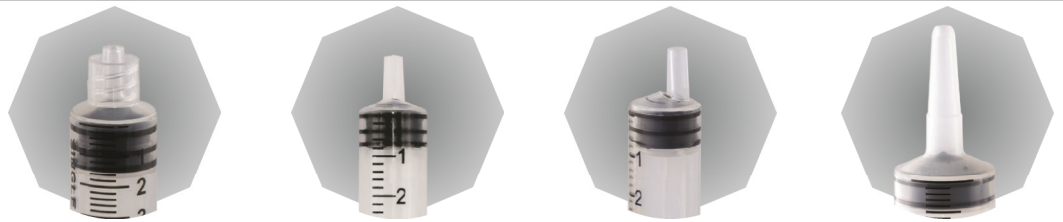


Syringes

# SOL-M™ Syringe, 3-piece

- **High-transparency barrel** - makes it easy to see syringe content.
- **Silicone lubrication** - ensures smooth plunger movement.
- **Safe plunger backstop** - prevents accidental withdrawal of plunger.
- **Large and stable finger grip** - ensures stability and comfort during injection.
- **Luer Slip (concentric and eccentric), Luer Lock and Catheter options.**

## SOL-M™ Syringe without Needle - Blister



Capacity	Luer Lock	Luer Slip Concentric	Luer Slip Eccentric	Catheter
1 ml	180001 180001PP*	180011		
3 ml	180003	180003ST		
5 ml	180005	180005ST		
10 ml	180010	180010ST	180010ET	
20 ml	180020	180020ST	180020ET	
30 ml	180030			
60 ml	180060		180060ET	180060CT****

## SOL-M™ Luer Lock Syringe without Needle - Tray

Capacity	Luer Lock	Luer Slip Concentric	Luer Slip Eccentric	Catheter
1 ml	180001T** 180001TPC***			

\* Polypropylene \*\*Polypropylene, tray \*\*\*Polycarbonate, tray \*\*\*\*with Luer Slip adapter and tip cap

# SOL-M™ Syringe, 3-piece



Syringes



Capacity from 1 ml to 60 ml.

1 ml: polypropylene and polycarbonate options.

DEHP- and PVC- free, not made with natural rubber latex.

Sterile and single-use.

Sterilization method: ethylene oxide.



Syringes

# SOL-M™ Syringe, 3-piece

## CE-marked

### LUER SLIP

#### SOL-M™ Slip and Eccentric Tip Syringe without Needle

Reference number	Tip	Capacity	Shelf Box / Shipping Case (pcs)
180003ST	concentric	3 ml	100/800
180005ST	concentric	5 ml	100/800
180010ET	eccentric	10 ml	100/1200
180010ST	concentric	10 ml	100/1200
180020ET	eccentric	20 ml	100/800
180020ST	concentric	20 ml	100/800
180060ET	eccentric	60 ml	30/240

### LUER LOCK

#### SOL-M™ Luer Lock Syringe without Needle

Reference number	Capacity	Shelf Box / Shipping Case (pcs)
180003	3 ml	100/800
180005	5 ml	100/800
180010	10 ml	100/1200
180020	20 ml	100/800
180030	30 ml	50/400
180060	60 ml	30/240

### CATHETER

#### SOL-M™ Catheter Tip Syringe

Reference number	Capacity	Shelf Box / Shipping Case (pcs)
180060CT	60 ml	30/240

# SOL-M™ Syringe, 3-piece

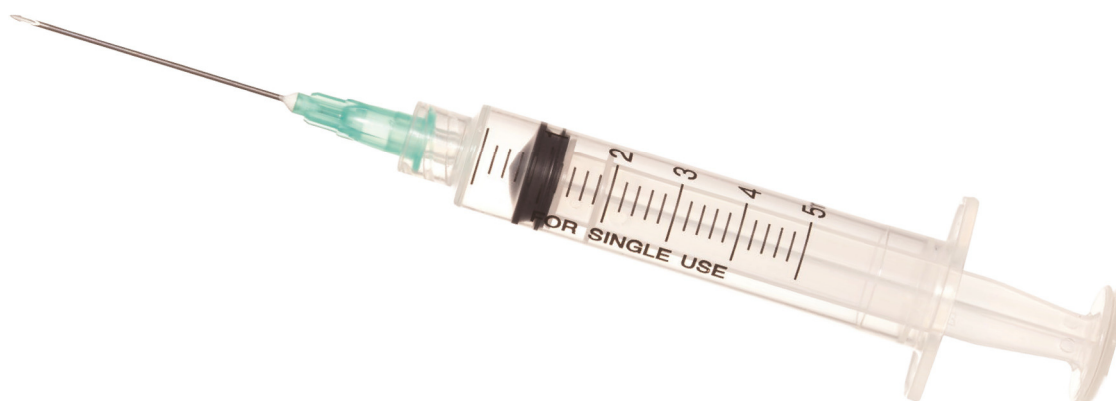


CE-marked

## SOL-M™ Luer Lock Syringe with Exchangeable Needle

Reference number	Capacity	Gauge size	Outer diameter (mm)	Length		Shelf Box / Shipping Case (pcs)
				(mm)	(inch)	
1832310	3 ml	23G	0.6 mm	25 mm	1"	100/800
1832215	3 ml	22G	0.7 mm	40 mm	1 1/2"	100/800
1832115	3 ml	21G	0.8 mm	40 mm	1 1/2"	100/800
1852215	5 ml	22G	0.7 mm	40 mm	1 1/2"	100/800
1852115	5 ml	21G	0.8 mm	40 mm	1 1/2"	100/800
1812115	10 ml	21G	0.8 mm	40 mm	1 1/2"	100/1200

More sizes available on demand



## SOL-M™ Luer Lock Syringe with Blunt Fill Needle

Reference number	Capacity	Gauge size	Outer diameter (mm)	Length		Shelf Box / Shipping Case (pcs)
				(mm)	(inch)	
1831815B	3 ml	18G	1.2 mm	40 mm	1 1/2"	100/800
1851815B	5 ml	18G	1.2 mm	40 mm	1 1/2"	100/800
1811815B	10 ml	18G	1.2 mm	40 mm	1 1/2"	100/1200



Syringes

# SOL-M™ Syringe, 3-piece

CE-marked

## LOW-DOSE SYRINGES

### SOL-M™ Slip Tip Syringe without Needle

Reference number	Capacity	Shelf Box / Shipping Case (pcs)
180011	1 ml	100/800

### SOL-M™ Slip Tip Insulin Syringe without Needle (U-100 Insulin Only)

Reference number	Capacity	Shelf Box / Shipping Case (pcs)
161000	1 ml	100/800

### SOL-M™ Luer Lock Syringe without Needle

Reference number	Capacity	Shelf Box / Shipping Case (pcs)
180001PP*	1 ml	100/800
180001**	1 ml	100/800

\* Polypropylene \*\*Polycarbonate

### SOL-M™ TB Slip Tip Syringe with Exchangeable Needle

Reference number	Capacity	Gauge size	Outer diameter (mm)	Length		Shelf Box / Shipping Case (pcs)
				(mm)	(inch)	
181027S	1 ml	27G	0.4 mm	12.5 mm	1/2"	100/800
181025S	1 ml	25G	0.5 mm	16 mm	5/8"	100/800

### SOL-M™ Slip Tip Insulin Syringe with Exchangeable Needle (U-100 Insulin Only)

Reference number	Capacity	Gauge size	Outer diameter (mm)	Length		Shelf Box / Shipping Case (pcs)
				(mm)	(inch)	
110102010037	1 ml	25G	0.5 mm	12.5 mm	1/2"	100/800

# SOL-M™ Syringe, 3-piece



CE-marked

## SOL-M™ TB Syringe with Fixed Needle

Reference number	Capacity	Gauge size	Outer diameter (mm)	Length		Shelf Box / Shipping Case (pcs)
				(mm)	(inch)	
181027	1 ml	27G	0.4 mm	12.5 mm	1/2"	100/800
181025	1 ml	25G	0.5 mm	16 mm	5/8"	100/800

## SOL-M™ Insulin Syringe with Fixed Needle (U-100 Insulin Only), PE Bag

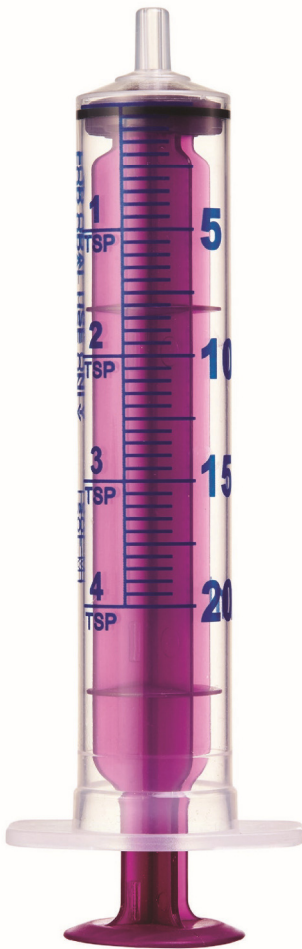
Reference number	Capacity	Gauge size	Outer diameter (mm)	Length		Shelf Box / Shipping Case (pcs)
				(mm)	(inch)	
1633051B	0.3 ml	30G	0.3 mm	8 mm	5/16"	100/1000
1632912B	0.3 ml	29G	0.33 mm	12.5 mm	1/2"	100/1000
1653151B	0.5 ml	31G	0.25 mm	8 mm	5/16"	100/1000
1653012B	0.5 ml	30G	0.3 mm	12.5 mm	1/2"	100/1000
1653051B	0.5 ml	30G	0.3 mm	8 mm	5/16"	100/1000
1652912B	0.5 ml	29G	0.33 mm	12.5 mm	1/2"	100/1000
1613151B	1 ml	31G	0.25 mm	8 mm	5/16"	100/1000
1613012B	1 ml	30G	0.3 mm	12.5 mm	1/2"	100/1000
1613051B	1 ml	30G	0.3 mm	8 mm	5/16"	100/1000
1612912B	1 ml	29G	0.33 mm	12.5 mm	1/2"	100/1000





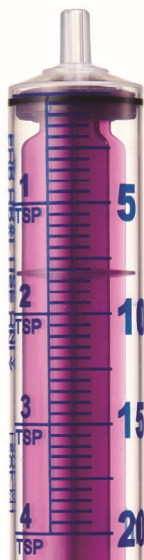
Oral  
Dispensers

# SOL-M™ Oral Dispensing Syringe

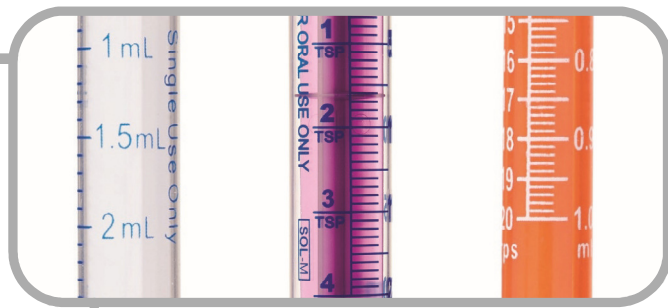
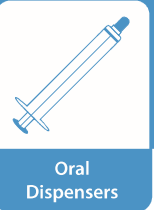


## For safe oral application of medicine:

- 3-piece syringes with O-ring.
- Available capacity: from 1 ml to 20ml.
- Clear scale markings for maximum accuracy.
- Not made with natural rubber latex.
- Special tip design - will not accept luer connector, preventing medication errors and accidental intravenous injections of oral liquids.
- Amber barrel - designed for light-sensitive drugs, in compliance with United States Pharmacopeia (USP) requirements.
- Purple plunger - alerts clinician that syringe is for oral use only.
- Two different packaging options:
  - Sterile, individual blister.
  - Non-sterile, bulk.
- Press-in bottle adapters and tip caps available.  
Bottle adapters:  
D-28 - REF. 2110BA  
D-24 - REF. 2100BA



# SOL-M™ Oral Dispensing Syringe



User-friendly graduation with millimeters, teaspoons and drops as units of measurement.



Protective tip cap - allows for safe transportation with no medication spillage.

## Product Specification



SOL-M™ Oral Dispensing Syringe			
Syringe size	Clear Barrel	Purple Plunger	Amber Barrel
1ml	21001OC	21001OP	21001OA
3 ml	21003OC	21003OP	21003OA
5 ml	21005OC	21005OP	21005OA
10 ml	21010OC	21010OP	20010OA
20 ml		21020OP	

Sales Unit: 100 pcs/Box; 400 pcs/Case (for 20 ml 50 pcs/Box; 400 pcs/Case)

Flexibility in product customization for packaging and labeling.





# SOL-CARE™ Safety Blood Collection Tube Holder Set

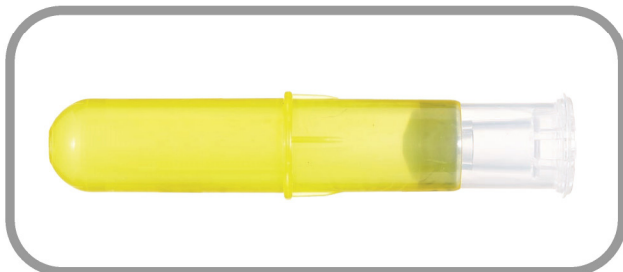
SOL-CARE™ Safety Blood Collection Tube Holder Set is a high-quality and high-tech blood collection device, designed to improve the performance of healthcare workers, while also offering maximum safety.



### Holder

Compatible with:

- standard and flashback multi-sample needles.
- standard blood collection tubes.



### Vacuum Activation Tube

Retraction technology to capture the needle after blood has been collected.

**Ref. number:** 7001BCD

**Sales Unit:** 50 pcs/Box; 400 pcs/Case

**Minimum training requirement** - "Using the yellow activation tube is like adding a blood collection tube".

**In-vein retraction** - effectively reduces the risk of needlestick injuries and blood exposure.

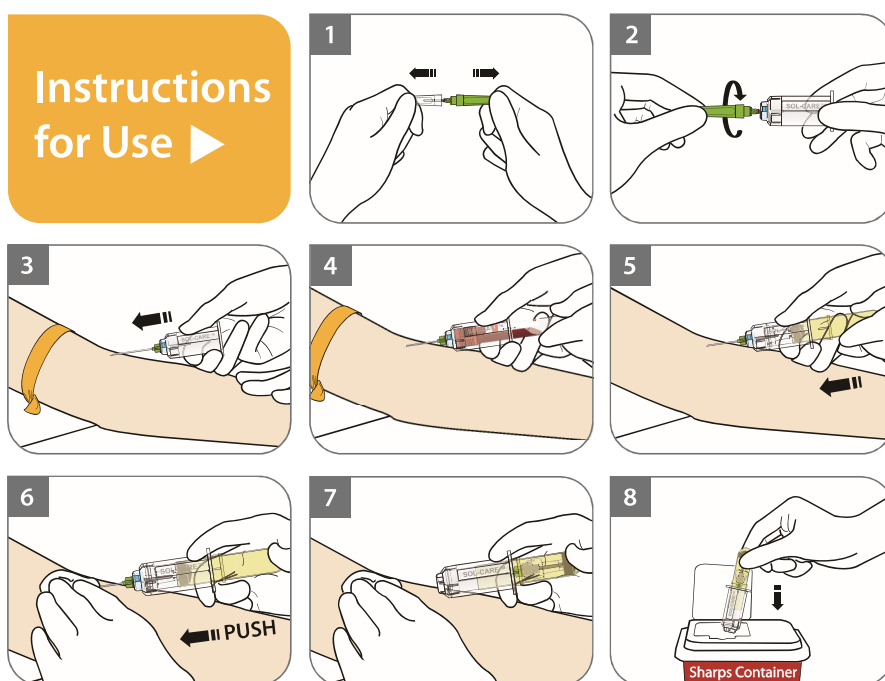
**Speed of needle retraction** - lower risk of vein damage.

# SOL-CARE™ Safety Blood Collection Tube Holder Set



- 1 The safety mechanism is an integral part of the device and **doesn't block the sight** of the needle tip.
- 2 Activation virtually eliminates exposure to both ends of the contaminated needle, **reducing the risk of needlestick injury**.
- 3 Allows users to **keep** both **hands behind the needle** when activating the needle retraction feature.
- 4 **Complies with OSHA regulations** to prevent cross-contamination.

## Instructions for Use ▶



SOL-CARE™ Safety Blood Collection Tube Holder Set  
with Pre-attached Multi-sample Needle

SOL-CARE™ Safety Blood Collection Tube Holder Set  
with Pre-attached Flashback Needle

COMING  
SOON!