

## Company Introduction

SteriLance is dedicated to developing, manufacturing, marketing, and customer service of medical devices and disposables.

Established in 1993, SteriLance has been making continuous efforts to provide innovative safety-engineered medical products to hospital and home care market, and now it is one of the leading manufacturers of capillary blood lancing devices and disposable scalpels worldwide.

CE

FDA

TÜV

ISO13485

JQMS

CAMCAS





SteriLance™ LDE

Adjustable Lancing Device with Ejector

Universal for all standard lancets on the market.  
Six penetration depths available.  
Simple and quick activation and reactivation.  
Easy and safe lancet ejection after use.  
An optional clear end cap for Alternate Site Testing(AST).

The depth adjustment features allow users to select the optimum setting for their requirements, and an optional, clear end caps allow the devices to be used on alternate sites such as the forearm for painless testing.

Before attempting Alternate Site Testing, users are advised to consult the instructions supplied with their blood glucose monitoring system, and their professional medical advisors.

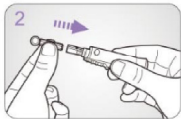


AST Cap

How to Use



Wash your hands with soap and warm water and dry them thoroughly. Remove the cap.



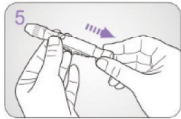
Place a new lancet firmly into the lancet holder.



Remove the protective cover from the lancet. Do not discard this cap.



Attach the cap back and adjust the puncture depth as required by rotating the tip of the cap. "1" for delicate skin, "2" for normal skin and "3" for thick or callused skin.



Pull the rear sliding barrel out until it clicks (you may have already cocked the barrel in step 2, this is okay). The lancing device is now ready to use.



Hold the lancing device firmly against the sample site. Press the release button to puncture the skin.



Place the lancet protective cover on a hard surface, then push the used lancet tip into the lancet protective cover which was removed earlier.



Slide the ejector forwards until the lancet is pushed out of the device, dispose of the used lancet into an approved sharps container.

Lancing Alternate Test Sites



When using AST cap, press and hold the lancing device firmly against the fleshy area on the chosen AST site. Apply steady pressure and the skin inside the target area will rise slightly. Push the trigger button to puncture the skin.

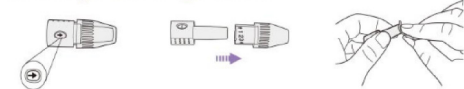
Reorder #	Description	Color	Specification	Package
02-1300	SteriLance LDE	Gray/White	6 Adjustable depths	Individually packaged
02-0600	LDE AST Cap	Transparent	N/A	100pcs/case

SteriLance™ LDE3

Adjustable Lancing Device with Ejector

Easier to use  
More obvious digital depth indicator in 2 opposite windows.  
Cap attached via a bayonet fitting instead of traditional screw thread connection.  
An optional clear end cap for Alternate Site Testing(AST).

Thorough Cleaning Feature

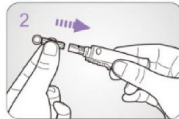


If any blood gets onto the inside surface of the depth adjustment cap, please rotate the clear tip to "↑" first and pull out the clear tip and wipe the inside of the cap using a lightly moistened cotton ball with the disinfectant.

How to Use



Carefully remove the cap from the lancing device.



Insert the lancet into the lancet holder, push until the lancet comes to a complete stop inside the device.



Remove the protective cover from the lancet. Do not discard this cap.



Attach the cap back onto the lancing device, and adjust the desired depth of penetration. 1-2 for delicate skin, 3-4 for normal skin and 5-6 for thick or callused skin.



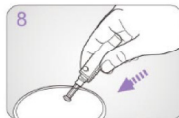
Pull the rear sliding barrel out until it clicks (you may have already cocked the barrel in step 2, this is okay). The lancing device is now ready to use.



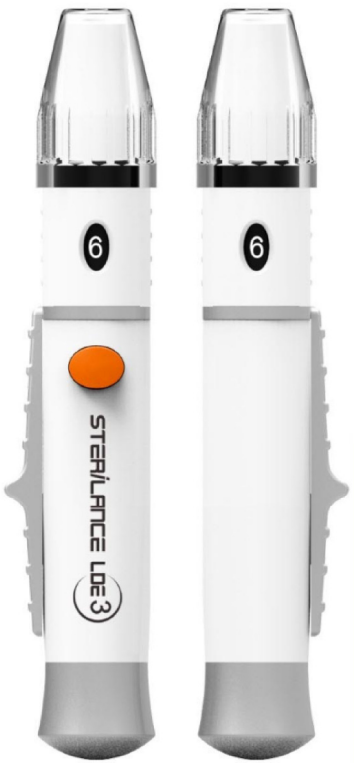
Hold the lancing device firmly against the sample site. Press the release button to puncture the skin.



Place the lancet protective cover on a hard surface, then push the used lancet tip into the lancet protective cover which was removed earlier.



Slide the ejector forwards until the lancet is pushed out of the device, dispose of the used lancet into an approved sharps container.



Front

Back

Reorder #	Description	Color	Specification	Package
02-1901	SteriLance LDE3	Gray/White	6 Adjustable depths	Individually packaged
02-1902	LDE AST Cap	Transparent	N/A	100pcs/case

## SteriLance™ Standard Lancets

- Good blood flow: triple bevel needle tip.
- Versatile: fit most commonly used lancing devices.
- Sterile: sterilized by gamma irradiation.
- Larger gauge numbers stand for thinner needle tip.



### SteriLance™ Soft Twist Lancet

Reorder #	01-0121	01-0123	01-0126	01-0128	01-0130	01-0132	01-0133
Specification	21 G	23 G	26 G	28 G	30 G	32 G	33 G
Color	Yellow	Light Blue	Pink	Blue	Purple	Ivory	Green
Package	100pcs/box	5,000pcs/case	200pcs/box	10,000pcs/case			

### SteriLance™ Clic Pull-top Lancet

Reorder #	01-0428	01-0430	01-0432	01-0433
Color	Blue	Purple	Ivory	Green
Specification	28 G	30 G	32 G	33 G
Package	100 pcs/box	5,000 pcs/case		



### SteriLance™ Steel Disposable Steel Lancet



- Low cost: simple flat, steel lancet.
- Sample volume: excellent blood flow.
- High quality harden surgical steel.
- Sterile: sterilized by gamma radiation.

Reorder #	Description	Specification	Package
01-0540	Disposable steel lancet	SteriLance Steel	200pcs/box
01-0539	Disposable steel lancet	SteriLance Pricker	Five-pieces packaging

### SteriLance™ Alcohol Pre Pads

- Isopropyl Alcohol, 70% by volume.
- For preparation of the skin prior to injection or lancing.
- For external use only.

Reorder #	Description	Specification	Package
06-023060	Alcohol pre pads	30*60mm	1pc/sealed foil wrap 100pcs/box 5,000pcs/case





## SteriLance™ Press & Press2

### Pressure Activated Safety Lancets

#### Simple

Contact activated design, lancet activates in 1 step.  
Intuitive procedure reducing training time.  
Puncture depth is controlled for enough blood sample and independent of clinician's skills.

#### Safety

One-step activation promotes safety with fast, precise, and consistent punctures.  
Design prevents product from being reused, reducing the possibility of patient, clinician, and/or sample contamination.  
Automatic retraction of lancet into device avoids the possibility of injury.

#### Versatile

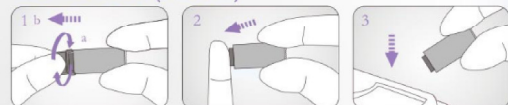
Different needle sizes for different skin types and applications for each capillary type.

#### How to Use (Press)



1 Pull out the protective cap and discard.  
2 Press the lancet body firmly against the puncture site to activate the device.  
3 Dispose of the used lancet in a suitable sharps container.

#### How to Use (Press2)



1 TWIST cap until it separates easily from lancet body.  
2 Press the lancet body firmly against the puncture site to activate the device.  
3 Dispose of the used lancet in a suitable sharps container.

Press Recorder #	Press2 Recorder #	Color	Specification	Package
05-053018	05-063018	Turquoise	30G/1.8mm	100pcs/box
05-052818	05-062818	Purple	28G/1.8mm	
05-052618	05-062618	Yellow	26G/1.8mm	1000pcs/case
05-052318	05-062318	White	23G/1.8mm	
05-052118	05-062118	Light Blue	21G/1.8mm	
05-052122	05-062122	Orange	21G/2.2mm	
05-052128	05-062128	Rose	21G/2.8mm	
05-051818B	05-061818B	Green	18G/1.8mm	

Note: Larger gauge numbers stand for thinner needle tip.

Press: Pull top cap



Press2: Twist off cap

## SteriLance™ Press4

### Pressure Activated Safety Lancets



SteriLance Press4 is a new version of our Press2. It keeps the key benefits of our Press2 and integrates with several additional functions to make it the best solution for capillary blood sampling.

#### Contact activated only

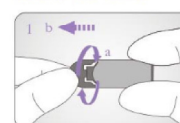
When the cap is on, the lancet will never be activated.  
Misfiring avoided in case of incomplete cap twisting off.

#### Ergonomic design

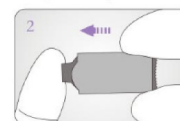
Lancet tip become smaller to make positioning on fingertip easier.  
Trigger position indicating the before use and after use status of the device.  
Easier twist-off cap design.



#### How to Use



1 TWIST off the cap first and then pull it straight out.



2 Press the lancet body firmly against the puncture site to activate the device.



3 Dispose of the used lancet in a suitable sharps container.

Easier twist-off cap design.



Recorder #	Color	Specification	Package
05-083018	Turquoise	30G/1.8mm	100pcs/box
05-082818	Purple	28G/1.8mm	
05-082618	Yellow	26G/1.8mm	
05-082128	Rose Red	21G/2.8mm	
05-082118	Light Blue	21G/1.8mm	
05-082122	Orange	21G/2.2mm	1000pcs/case
05-081818B	Green	18G/1.8mm	

Note: Larger gauge numbers stand for thinner needle tip.





## SteriLance™ Lite3

### Button Activated Safety Lancet

SteriLance Lite3, a new version of Lite2, keeps the key benefits of Lite2 and integrates with several additional functions.

#### New Ergonomic Features

Ergonomic longer and flat comfort button design. Smaller Lancet tip to make positioning easier.

#### Accurate and Less pain

Controlled needle depth for enough blood sample and provide greater patient comfort.

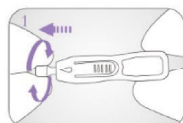
#### How to Use



Recommended location for finger blood sampling.



Recommended location for infant heel blood sampling.



Carefully twist off the protective cap until it is separated from the device.



Place the lancet firmly against the puncture site, then press the trigger to activate.



Discard the used lancet into a suitable sharps container.

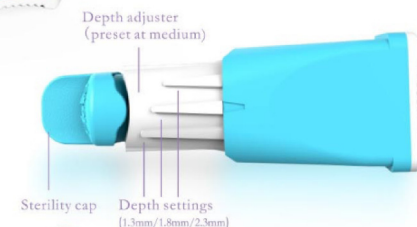
Reorder #	Color	Specification	Package
05-112818	Purple	28G/1.8mm	100pcs/box 1,000pcs/case
05-112618	Yellow	26G/1.8mm	
05-112624	Light Blue	26G/2.4mm	
05-112118	Orange	21G/1.8mm	
05-112124	Rose	21G/2.4mm	
05-111818B	Green	18G/1.8mm	

Note: Larger gauge numbers stand for thinner needle tip.



## SteriLance™ Flex3

### Depth Adjustable Safety Lancets



#### Better care for Patients and Clinicians

Three depth settings work with varying patient types. Contact activated design, lancet activates in 1 step. Lancet automatically retracts after use to help prevent accidental fingersticks and enhance infection control.

#### Economic value

Single SKU helps simplify inventory management. Minimal training required. Different needle sizes for different skin types and applications for each capillary test.

#### Ergonomic design

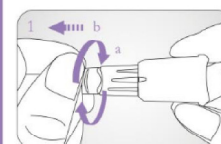
Trigger position indicating the before use and after use status of the device. Easier twist-off cap design.



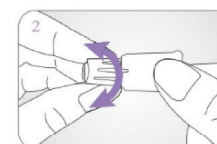
Reorder #	05-1521A	05-1523A	05-1526A	05-1528A	05-1530A
Specification	21G	23G	26G	28G	30G
Color	Gray	Blue	Yellow	Orange	Rose Red
Package	200pcs/box	2,000pcs/case			

Note: Larger gauge numbers stand for thinner needle tip.

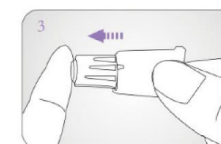
#### How to Use



TWIST off the cap first and then pull it straight out.



Rotate the adjustable tip to set the required depth.  
 # Low depth(1.3mm)  
 # Medium depth(1.8mm)  
 # High depth(2.3mm)



Place the lancet body firmly against the puncture site to activate the device.



Dispose of the used lancet in a suitable sharps container.





**SteriHeel Plus**  
Heel Incision Safety Lancet

*A gentle and safe blood sampling device designed for heel sticks in premature infants, newborns and babies.*



**Baby Comfort and Safety**

No need to take away safety tab to avoid any choking risks.  
Extra Thin Steel Blade provides the finest, cleanest surgical incision.  
Permanently retractable blade minimizes possible injury or reuse.  
Consistent Depth and Width of incision provides excellent blood flow.

**Easier Use than Ever: Single Hand Operation**

Finger Contoured Design provides a steady and stable grip.  
Tapered contact surface provides better visibility of site location.  
Pull the safety tab and press the trigger in one direction.

**How to Use**



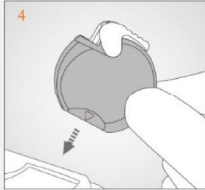
Select a site identified in the colored area above. Clean the incision site of the heel with an antiseptic swab and allow skin to air dry.



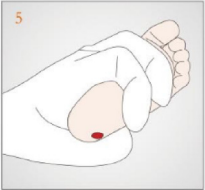
Release trigger lock mechanism by pushing down the safety tab.



Place the blade slot surface of the device flush against heel site. Ensure that both ends of the device in contact with the skin, and depress the trigger.



After triggering, remove the device from infant's heel and discard it into a biohazard sharps container.



First drop of blood should be wiped away gently with a dry sterile gauze pad. Apply gentle pressure with the thumb and ease intermittently as drops of blood form.



Following blood collection, gently press a dry sterile gauze pad to the incision site until bleeding has ceased.

Reorder #	05-106514	05-108575	05-101025	05-101428	05-102030
Description	Micro-Premie	Premie	Newborn	Newborn Plus	Toddler
Color	Green	Orange	Yellow	Pink	Blue
Package	50pcs/box	1,000pcs/case			



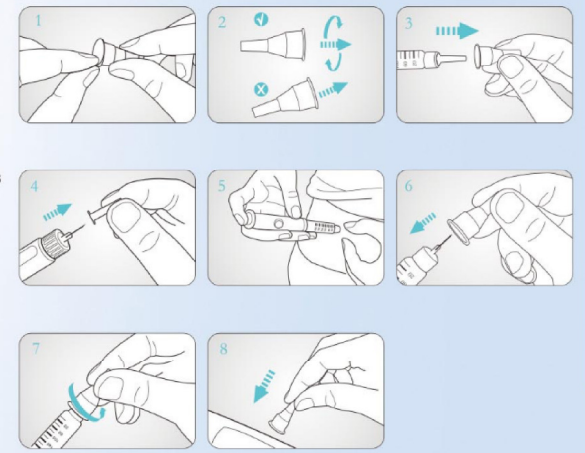


**easydrip™**  
Insulin Pen Needles



- Comfortable injection**  
premium needle quality and triple beveled tip
- Thin wall technology**  
ensures optimal insulin flow
- Siliconized needle**  
minimizes irritation and reduces penetration forces
- Versatile**  
fits most commonly used insulin pens
- Colour coding**  
simple identification of different needle lengths

How to Use



Reorder #	Color	Specification	Package
18-2912	Rose	29G 12mm	100pcs/box 2,000pcs/case
18-3006	Dark Blue	30G 6mm	
18-3008	Turquoise	30G 8mm	
18-3106	Orange	31G 6mm	
18-3108	Green	31G 8mm	
18-3204	Peach	32G 4mm	